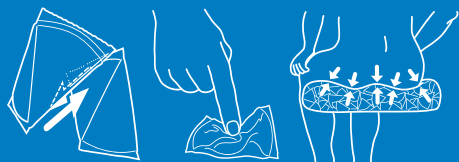


The Vicair principle



The Vicair principle is based upon the unique Vicair technology. It offers the user the unique combination of high performance pressure distribution, optimal positioning and excellent skin protection. The Vicair technology is developed in cooperation with the Amsterdam Rehabilitation Centre. It was awarded with the Grand Prix at the 'Salon des Inventions' in Geneva, Switzerland.

Each Vicair cushion is filled with hundreds of air-filled SmartCells™. These flexible cells have a low friction level when in contact with each other. This allows them to constantly adapt and conform to the body's contours, creating excellent pressure relief. The cells in the Vicair products are contained in strategically placed compartments, providing stability, optimal positioning and balance for every user.

The Vicair cushion is always ready for use. Safe, durable and low on maintenance.

Complete your seating system with our back systems:



Vicair Anatomic back

- Fully adjustable positioning back
- Quality strap back system, easily attached to backrest canes
- Fine adjustment of SmartCells for scoliosis, kyphosis or lordosis



Vicair Multifunctional back

- Velcro attached onto an existing back plate
- Easily adjusted whilst client seated for kyphosis, lordosis, scoliosis

More information at
vicair.com/back-systems

CONTACT DETAILS DISTRIBUTOR

VICAIR®

VECTOR O2



1st

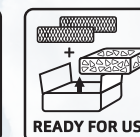
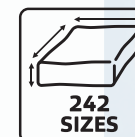
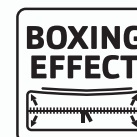
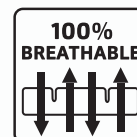
FULLY MACHINE
WASHABLE
WHEELCHAIR
CUSHION*

VICAIR®

Bruynvisweg 5 1531 AX Wormer Netherlands
T + 31 (0)75 642 99 99 info@vicair.com
vicair.com

Follow us at:

[f](#) VicairNL [t](#) Vicair_NL



relief by air

VICAIR®

VECTOR O2

The Vector O2 tackles the hygiene issues caused by incontinence. The open structure of the cushion allows the cushion to be easily washed in any washing machine. Without the need for a laundry bag, and without removing the SmartCells. The cushion is ideal for both institutional and home use where incontinence, skin temperature and humidity is an issue.

Anatomically contoured seat surface for optimal immersion and functional stability

Trochanter supports firmer density to provide lateral stability, and transfer pressure away from ischial well. Can be adjusted for obliquities, increased lateral stability or trochanter comfort.

Adductor section: can be made firmer for adduction or easier transfers.

Abduction section: can be firmed up for increased abduction or emptied for easy catheter access.

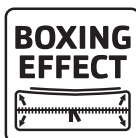
Ischiatric well

Mid height zip closure for easy adjustment when client is seated, and to increase cushion immersion.

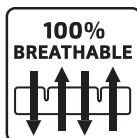
Thigh depth adjustment to reduce seat to floor height (foot propulsion) or increase thigh alignment. Increase for amputee frontal stability.



100% MACHINE WASHABLE
In all washing machines washable at 40°C without using a laundry bag or removing the SmartCells™.



BOXING EFFECT
More cushion volume creating better immersion and enhanced SmartCell support. Easier to adjust when client seated.



100% BREATHABLE
Cushion is fully breathable due to open fabric structure yet resistant to incontinence.



WIDE RANGE
With 121 sizes available in both 6 cm and 10 cm height the Vector O2 will cover virtually all sizing requirements.

Technical specifications

Cushion

Height	6 cm or 10 cm
Weight	500 - 850 grams
Max. user weight	15-250 kg
Machine washable	40°C max.
Drying time	Air dry 5 to 6 hours
Warranty	24 months

Cover

Standard	2x O2 Top Cover
Optional	Comfair- or Incontinence Cover
Machine washable	60°C

Cushion sizes

Inch		14	15	16	17¼	18	19	20	21	22	23	24
	CM	35	38	40	43	45	48	50	53	55	58	60
14	35											
15	38											
16	40											
17¼	43											
18	45											
19	48											
20	50											
21	53											
22	55											
23	58											
24	60											

Standard
Special
On request

* The Vector O2 is the first air displacement wheelchair cushion that is entirely machine washable.

relief by air