



America's Lift Leader™

ALPINE



PINNACLE



STRAIGHT STAIR LIFTS





"Staying in their own homes as they age is important to nearly all adults 50+"*

More than ever before, customers are demanding **innovative solutions** to enable them to stay in their homes as long as possible. With a full range of solutions for practically any situation and budget, Harmar extends our commitment to making homes fully accessible with the **Pinnacle and Alpine stairway lifts**.

A complete portfolio of high quality stair lifts sold through Harmar's **extensive and knowledgeable dealer network** offers customers the ultimate peace of mind. All Harmar stair lifts are designed and **manufactured in the USA** and tested at full weight capacity before shipment. They are engineered to be quickly installed, require little to no maintenance and be easily serviced. They ship with the industry's **shortest lead times** and are hand-built by our veteran manufacturing team.

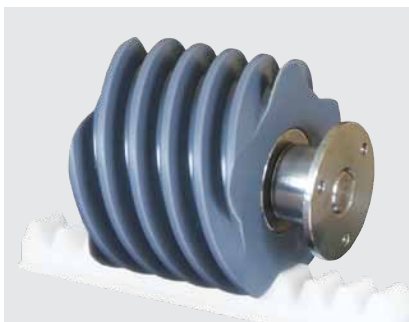


Pinnacle Premier Seat

At Harmar, we deliver innovation that matters to you and your customer, and back it up with the best customer service and most experienced support teams in the industry. Experience **The Harmar Difference** today.

The **Pinnacle Fully-Automatic Folding Rail Option** SL600FR is Harmar's patented auto folding rail option and is the first of its kind in the industry. Charging strips are located above and below the fold, and the option is fully mechanical to eliminate the need for additional motors and gears. The SL600FR ships pre-assembled and requires **no additional installation time!**

PINNACLE FEATURES



The energy efficient patented worm drive requires no greases or lubricants.



Safety sensors on carriage and platform stop the lift instantly when obstacles are present.



An industry first, automatic fold design eliminates obstructions at the bottom of the stairway.

*(Based on a random survey by AARP of over 29,000 adults age 50+ states, the district of Columbia, Puerto Rico and the Virgin Island between January 2-31, 2011.)
Copyright © 2011 AARP Research & Strategic Analysis, Reprinted with Permission.

RESIDENTIAL STAIR LIFT SOLUTIONS



Pinnacle Benefits

- **Non-handed:** These units ship ready to install on either side of the staircase with no field modifications required.
- **Lightweight:** Can easily be installed by a single person in no time at all. The heaviest component is 58 lbs. and the box includes convenient carry handles.
- **Clean:** No greases or lubricants to make a mess or dirty your customer's home
- **Compact:** Narrowest stair lift in the industry at 11" wide when folded
- **Architectural Series:** Premium seating, upholstery and anodized track options
- **Patented Technologies:** Unique drive system and folding rail option

Alpine Benefits

- **Multiple Power Options:** DC and AC (Available 1Q 2012)
- **Common Track:** Regardless of power or model, makes stocking simple
- **Several Models to Choose From:** Alpine, Alpine Express, and Alpine Signature
- **Quiet Drive System with Smooth Stop and Start**
- **Service Friendly 2-Piece Chassis Cover Design**
- **Aesthetic Track, Finished Floor Mounts, and Integrated Charging Bases**
- **Easy Access to Manual Backup**



Standard Features

- Fixed Upholstered seat and armrest
- Folding Footrest



Express

- Folding Seat Bottom
- Folding Arms
- Larger Contoured Seat



Signature

- Ergonomic Seat with Coordinating Upholstery
- Folding Padded Arms
- Anodized and Folding Rail Option (2012)



Finished end caps embed track chargers and upper / lower limit switches

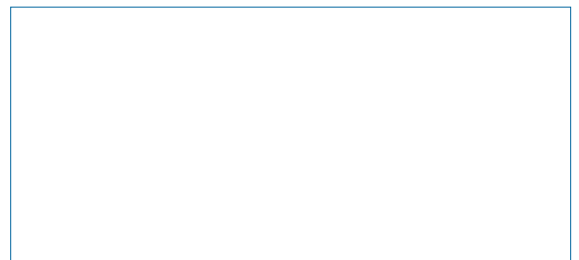
Stair Lift Features

General Specifications	Pinnacle	Alpine
Gear Output Speed at Rated Load:	62 rpm	30 rpm
Gear Output Torque at Rated Load:	18 lbs. / ft.	49.6 lbs. / ft.
Motor Output Amps at Rated Load:	14 amps	20 amps
Overspeed Governer:	Yes	No
Track (rail) Type:	Clear Anodized	Extruded aluminum Natural Finish
Average Number of Return Trips per Charge: (varies with load, length)	20-40	10-20
Number of Tools Required to Install:	5	5
Symmetrical Lift: (Ships and installs no handed)	Yes	No
Control in Armrest: (left or right hand operation)	Yes	Yes
Need to Open Chassis to Install or Change Sides:	No	Yes
Lift Mounts to Steps or Wall:	Steps	Steps
Minimum Folded Width:	11"	15.25"
Minimum Footrest Height:	3.5"	8.25"
Minimum Swivel Length: (check knees)	26"	25.5"
Clear Distance Between Armrests:	19"	18"
Floor to Seat Height—Low / High:	20" / 24.5"	23-26"
Minimum Wall to Stair Side of Rail:	6.5"	11"
Seat Depth:	16"	14.5"
Backrest Height From Top of Seat:	18"	13.5"
Maximum Weight Capacity:	350 lbs.	300 lbs.
Electrical Requirements:	115 VAC	115 VAC
Operation Power:	24V DC Battery	24V DC Battery / AC
Maximum Travel:	70 ft.	32 ft.
Speed:	20 ft.. / minute	19 ft.. / minute
Incline Limits:	32-52°	25-50°
Drive System:	Helical Worm Gear	Rack & Pinion
Warranty:	3-Year on parts 10-Year on gear rack 1-Year on batteries	3-Year on parts 1-Year on batteries

Harmar stair lifts are designed to meet ANSI/ASME A18.1 Performance Safety Standards when properly equipped. While Harmar stair lifts meet national standards, it is imperative to check State and Local code requirements before installing to ensure compliance. Harmar stair lifts should only be installed by a certified, professional Harmar installer.



800-833-0478 | www.harmar.com



Extraordinary Lifting Capacity

Harmar delivers an industry-leading 600-pound capacity with the all-new **Pinnacle™ SL660HD** stairway lift. Extending the many benefits of the Pinnacle's patented Worm Drive, the SL660HD features a premium ride, little to no maintenance, comfortable seating, and ease of access with a 90° swivel -- now with **extraordinary lifting capacity**.



Features:

- Industry-best 600 pound capacity
- Up to 40-feet of travel
- Contoured 25-inch wide seat with extra-high moulded seatback and attractive upholstery
- Heavy duty seat, arm and foot rest frames
- Integrated, easy to use constant pressure control switch
- 90-degree swivel at upper and lower landings
- Fold-up footrest
- Non-handed for easy change to right or left side configuration
- 3-Year warranty on parts, 10-Year on gear rack, 1-Year on batteries

Outdoor Independence

The **Harmar SL350 Outdoor Stair Lift** features a time-tested cable operated drive system for the ultimate weather-proof lifting solution. Proven in nearly every climate and environment, the SL350 provides a smooth ride with **exceptional durability**.



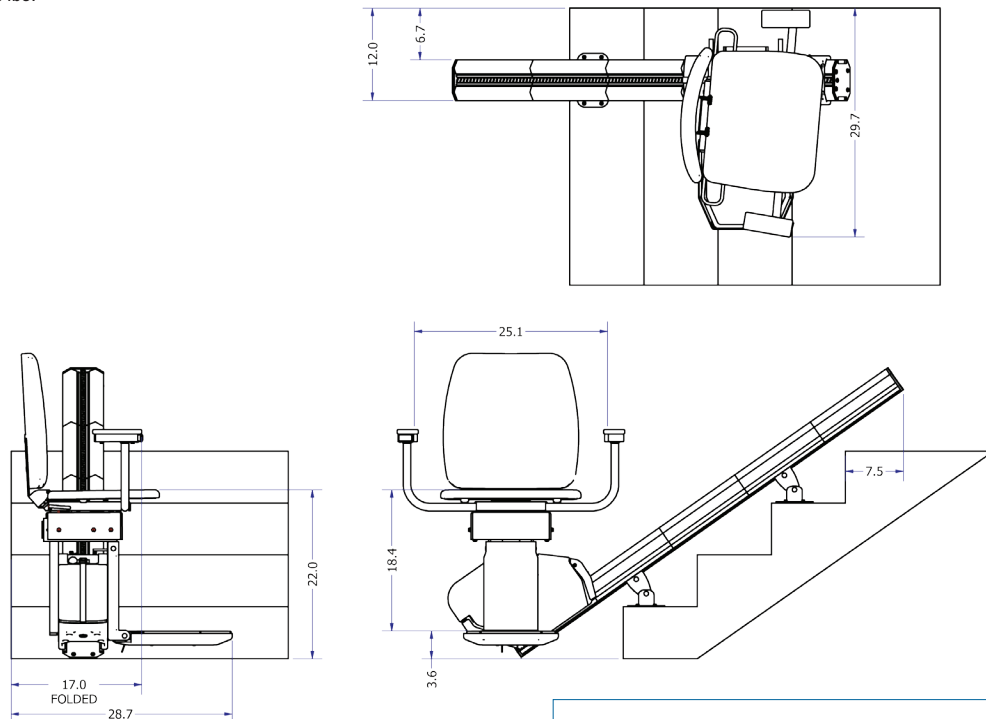
Features:

- Designed to withstand long-term outdoor use in temperature ranging from 0° F to 125° F
- Header cover, internal chassis cover and a large weatherproof cover included
- Smooth starts and stops
- Rocker controls with constant-pressure functionality stop the lift immediately if the control is released
- Mounts to the stairs (not the wall) on either side of staircase
- Operates on standard 115 VAC household current
- Extruded aluminum track is available in custom lengths
- Seat and footrest fold to save space
- Seat cushions made from exterior marine grade vinyl
- Separate controls at top and bottom of stairs
- 3-Year warranty on parts / 1-Year on battery

Stair Lift Features

Stair Lifts	Pinnacle Heavy Duty SL660HD	Harmar SL3500D
Product:	Pinnacle™ Heavy Duty Stair Lift	Harmar Outdoor Stair Lift
Lifting Capacity:	600 lbs.	350 lbs.
Drive:	Patented Worm Drive	Cable Drive
Power Source:	115 VAC - 15 amps	115 VAC - 20 amps
Power Supply:	24V DC Battery	AC
Track:	Clear Anodized Aluminum	Extruded Aluminum
Speed:	14 fpm	20 fpm
Folded Width (From Wall):	17"	16"
Seat Size:	25" W x 16" D x 18" H	19" W x 14" D x 14" H
Track Length:	16' Standard; Maximum 40'	16' Standard; Maximum 25'*
Warranty:	Components / Drive Train - 3 Year Rack - 10-Year Batteries 1-Year	Components - 3-Year Batteries 1-Year
Made in America:	Yes	Yes
Range of Inclination:	27° - 52°	30° - 45°
Safety Devices:	Centrifugal overspeed brake Bi-directional footrest obstruction sensor Swivel seat cut-off switch Final limits Seat belt Chassis Obstruction Switching	Limit Switches Final Limit Switch Slack Cable Brake w/ Switch Footrest Obstruction Switch Swivel Seat Cut-off Switch Constant Pressure Controls

Harmar stair lifts are designed to meet ANSI/ASME A18.1 Performance Safety Standards when properly equipped. While Harmar stair lifts meet national standards, it is imperative to check State and Local code requirements before installing to ensure compliance. All State and Local compliance is the responsibility of the purchaser. Some states may require fees for site preparation and permits. Harmar stair lifts should only be installed by a certified, professional Harmar installer. If the stair lift is installed by any other means, the purchaser and installer assume responsibility for issues that may arise involving improper installation. *If track length greater than 20', weight capacity is reduced to 250 lbs.



800-833-0478 | www.harmar.com