

20  
YEARS  
nova



*Happy and Safe Every Day*



*Fall 2013*

Did you use the  
bathroom today?  
*Yes, we all did.*

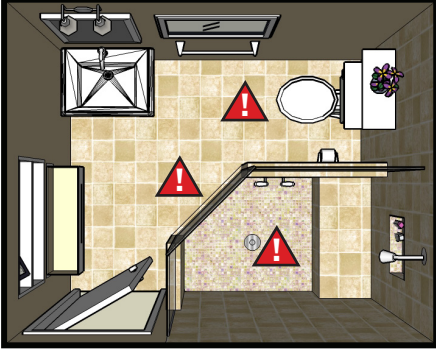


We cherish our  
bathroom time  
and depart much  
happier. We use the  
bathroom every  
day...365 days of  
each year. Make  
it happy and safe  
every day.

# We have the solutions for your bathroom hotspots!



## Bathroom "Hot Spots"



### Hot Spot #1 Getting on & off the toilet.



---

### Hot Spot #2 Getting in & out of the bath.



---

### Hot Spot #3 Bathing Independently.

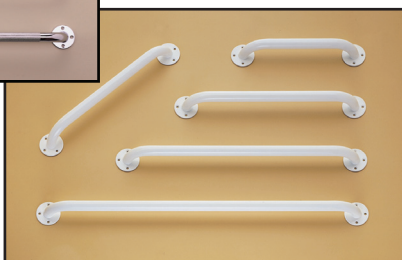


## GRAB BARS

### Wall Grab Bars

8012-R - 8032-R

1.5" wall stand-off • 2.5" fixed flange • rubber gaskets  
1" diameter tubing



ITEM #	DESCRIPTION
8012CH-R	12" WALL GRAB BAR - CHROME
8016CH-R	16" WALL GRAB BAR - CHROME
8018CH-R	18" WALL GRAB BAR - CHROME
8024CH-R	24" WALL GRAB BAR - CHROME
8032CH-R	32" WALL GRAB BAR - CHROME
8012PC-R	12" WALL GRAB BAR - IVORY
8016PC-R	16" WALL GRAB BAR - IVORY
8018PC-R	18" WALL GRAB BAR - IVORY
8024PC-R	24" WALL GRAB BAR - IVORY
8032PC-R	32" WALL GRAB BAR - IVORY

### Tub Grab Bar

8220



**8220**

- Made of 1" powder coated steel tubing
- Rubber contact points
- Clamp adjusts from 3" - 7"
- Dimensions: 12"h x 6"w
- Weight Capacity: 275 lbs.

## Suction Cup Grab Bar

8212-R

8212-R

- Provides added support when entering and leaving a bath tub or shower
- Installs quickly; perfect for home or travel use
- Easy to attach and remove
- Secure suction indicator displays green for secure and red for not secure
- No tools required
- 12"l x 4.75"w



## Rubber Bath Mats

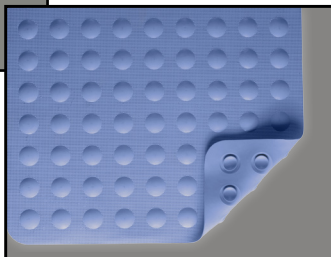
9350-R & 9351-R

9350-R



- Attaches securely to tub surface and helps prevent slipping
- Anti-fungal treated
- 16" x 28"

9351-R



## Hand Held Shower Sets

### 9300-R

- Extra long 84" reinforced hose allows user to shower while seated
- On/Off valve allows for water flow control
- Includes wall mounting holder



### 9301-R

- Extra long 84" reinforced hose allows user to shower while seated
- On/Off valve allows for water flow control
- Includes wall mounting holder

### 9311-R

- Extra long 84" reinforced hose allows user to shower while seated
- 5 Settings: Regular/ Shower Spray / Massage / Water Drip / Shower Stop
- Includes wall mounting holder
- On/Off valve allows for water flow control



## Adjustable Bath Benches

### 9010 & 9020 with Removable Back

- Removable back (9020 only)
- Ergonomically designed back provides added comfort and support
- Multiple drainage holes
- Non-skid rubber tips
- Built-in hand held shower holder



- |   |   |
|---|---|
| • <b>Seat Height Adjustment:</b><br>14" - 21" | • <b>Overall Seat Dimensions:</b><br>23.25"w x 18.5"d                             |
| • <b>Overall Dimensions:</b><br>19"w x 19"d   | • <b>Overall Weight 9010/9020:</b> 5/7 lbs.<br>• <b>Weight Capacity:</b> 300 lbs. |

## Bariatric Bath Bench

### 9013 & 9023 with Removable Back

- Back included (9023 only)
- Aluminum anodized frame
- Heavy duty blow molded seat
- 500 lb. weight capacity



- |   |   |
|---|---|
| • <b>Seat Height Adjustment:</b><br>15" - 21" | • <b>Overall Seat Dimensions:</b><br>20"w x 8"d                                   |
| • <b>Overall Dimensions:</b><br>20"w x 17"d   | • <b>Overall Weight 9013/9023:</b> 5/7 lbs.<br>• <b>Weight Capacity:</b> 500 lbs. |

## Hygienic Adjustable Bath Benches

### 9050 & 9060 with Removable Back

- Horseshoe design for hygienic purposes
- Non-skid rubber tips
- Removable back (9060 only)



- |   |   |
|---|---|
| • <b>Seat Height Adjustment:</b><br>14" - 21" | • <b>Overall Seat Dimensions:</b><br>19"w x 12.5"d                                |
| • <b>Overall Dimensions:</b><br>20"w x 18.5"d | • <b>Overall Weight 9050/9060:</b> 5/6 lbs.<br>• <b>Weight Capacity:</b> 300 lbs. |

# BATH & SHOWER BENCHES

## Bath Seat

### 9121 & 9101 with Removable Back

- Removable back (9101 only)
- Heavy duty molded plastic
- Aluminum anodized frame
- Slip resistant rubber tips
- Great for travel and easy to store
- Built-in hand held shower holder



- |  |   |
|--|---|
| • <b>Seat Height:</b> 15" - 19"            | • <b>Overall Seat Dimensions:</b> 20" w x 12" d |
| • <b>Overall Dimensions:</b> 20" w x 15" d | • <b>Overall Weight:</b> 6 lbs.                 |
|  | • <b>Weight Capacity:</b> 300 lbs.              |

## Deluxe Bath Seat

### 9016 & 9026 with Arms & Removable Back

- Heavy duty molded plastic
- Aluminum anodized frame
- Skid resistant rubber tips
- Push button release removable arms (9016/9026) and back (9026 only)



- |  |   |
|--|---|
| • <b>Seat Height:</b> 16" - 20"            | • <b>Overall Seat Dimensions:</b> 16" w x 13" d |
| • <b>Overall Dimensions:</b> 21" w x 16" d | • <b>Overall Weight 9016:</b> 10 lbs.           |
| • <b>Width Between Arms:</b> 18.5"         | • <b>Weight Capacity:</b> 275 lbs.              |

## Deluxe Adjustable Bath Benches

### 9120 & 9100 with Red Safety Handle

- Safety handle for extra support and balance can be attached to either side.
- Additional handles can be added
- Non-skid rubber tips
- Built-in hand held shower holder
- **Red Safety Handle:** Item # 9201-R



- |  |  |
|--|--|
| • <b>Seat Height Adjustment:</b> 15" - 21"     | • <b>Overall Seat Dimensions:</b> 19.5" w x 14" d (9100) |
| • <b>Overall Dimensions:</b> 19.5" w x 17.5" d | • <b>Overall Seat Dimensions:</b> 19.5" w x 16" d (9120) |
| • <b>Overall Weight 9120/9100:</b> 6/8 lbs.    | • <b>Weight Capacity:</b> 300 lbs.                       |



## Adjustable KD Bath Stool

### 9006-R

- Great for travel and easy to store
- Slip resistant rubber tips
- Aluminum anodized frame
- Easy to assemble with patented twist and lock design



- |   |   |
|---|---|
| • <b>Seat Height Adjustment:</b><br>13.5" - 20.5"           | • <b>Overall Seat Dimensions:</b> 13" d |
| • <b>Overall Dimensions:</b><br>3.15" w x 14.2" d x 15.5" l | • <b>Overall Weight:</b> 5 lbs.         |
|   | • <b>Weight Capacity:</b> 300 lbs.      |

## Adjustable Bath Stool

### 9005

- Great for use in small areas
- Slip resistant rubber tips
- Aluminum anodized frame



- |   |  |
|---|--|
| • <b>Seat Height Adjustment:</b><br>13" - 20"   | • <b>Overall Seat Dimensions:</b><br>12" w x 12" d |
| • <b>Overall Dimensions:</b><br>15" w x 14.5" d | • <b>Overall Weight:</b> 4 lbs.                    |
|   | • <b>Weight Capacity:</b> 250 lbs.                 |

## Tub Shower Board

### 9200

- Width adjusts to attach securely to most bathtubs
- Built-in soap holder
- Rubber covered clamps resist slipping and protect surfaces from scratching



- |   |  |
|---|--|
| • <b>Width Adjustment:</b><br>17.5" - 28"       | • <b>Overall Seat Dimensions:</b><br>14.5" w x 14.5" d |
| • <b>Overall Dimensions:</b><br>31" l x 14.5" w | • <b>Overall Weight:</b> 7 lbs.                        |
|   | • <b>Weight Capacity:</b> 250 lbs.                     |

# SHOWER SEATS & CHAIRS

## Foldable Shower Chair

9400

with Back

- Folds and unfolds in seconds
- Horseshoe design seat for hygienic purposes
- Great for travel and easy to store



- |   |   |
|---|---|
| • <b>Seat Height Adjustment:</b><br>18" - 21" | • <b>Overall Seat Dimensions:</b><br>16"w x 15.75"d                   |
| • <b>Overall Dimensions:</b><br>21"w x 21"d   | • <b>Overall Weight:</b> 9 lbs.<br>• <b>Weight Capacity:</b> 250 lbs. |

## Shower Chair with Back

9401

- Horseshoe design seat for hygienic purposes
- Arms provide added safety and lift assist capability



- |   |  |
|---|--|
| • <b>Seat Height Adjustment:</b><br>18" - 21" | • <b>Overall Seat Dimensions:</b><br>16"w x 15.75"d                        |
| • <b>Overall Dimensions:</b><br>21"w x 21"d   | • <b>Overall Weight 9401:</b> 9 lbs.<br>• <b>Weight Capacity:</b> 250 lbs. |

## Wall Mounted Shower Seat

9404

- Mounts directly to shower wall
- Saves space by folding up when not in use
- Includes wall mount anchors



- |   |  |
|---|--|
| • <b>Seat Height:</b> 20" - 23"             | • <b>Overall Seat Dimensions:</b><br>16"w x 16"d |
| • <b>Overall Dimensions:</b><br>16"w x 16"d | • <b>Overall Weight:</b> 7 lbs.                  |
| • <b>Width Folded:</b> 5"                   | • <b>Weight Capacity:</b> 250 lbs.               |

## Deluxe Transfer Bench

9070

with Removable Back

- Removable back
- Built-in soap holder and hand held shower holder
- Non-skid rubber tips and suction tips
- Converts easily for left or right hand transfers
- Aluminum anodized frame



- |   |  |
|---|--|
| • <b>Seat Height Adjustment:</b><br>18.5" - 23" | • <b>Overall Seat Dimensions:</b><br>31.5"w x 14.5" d                  |
| • <b>Overall Dimensions:</b><br>33"w x 19"d     | • <b>Overall Weight:</b> 11 lbs.<br>• <b>Weight Capacity:</b> 300 lbs. |

## Economy Transfer Bench

9071

with Removable Back

- Removable back
- Non-skid rubber tips and suction tips
- Converts easily for left or right hand transfers
- Aluminum anodized frame



- |   |  |
|---|--|
| • <b>Seat Height Adjustment:</b><br>18" - 22" | • <b>Overall Seat Dimensions:</b><br>26"w x 16"d                       |
| • <b>Overall Dimensions:</b><br>30"w x 21.5"d | • <b>Overall Weight:</b> 11 lbs.<br>• <b>Weight Capacity:</b> 300 lbs. |

## Bariatric Transfer Bench

9075

with Removable Back

- Removable back
- Heavy duty blow molded seat
- Non-skid rubber tips and suction tips
- Aluminum anodized frame
- Converts easily for left or right hand transfers



- |   |  |
|---|--|
| • <b>Seat Height Adjustment:</b><br>17" - 19" | • <b>Overall Seat Dimensions:</b><br>27.5"w x 16"d                       |
| • <b>Overall Dimensions:</b><br>30"w x 21"d   | • <b>Overall Weight:</b> 17.5 lbs.<br>• <b>Weight Capacity:</b> 500 lbs. |

## TRANSFER BENCHES

### **Padded Transfer Bench/Commode** **9073 with Removable Back**

- Removable back
- Removable seat for easy cleaning
- Non-skid rubber tips and suction tips
- Converts easily for left or right hand transfers
- Aluminum anodized frame



- |   |  |
|---|--|
| • <b>Seat Height Adjustment:</b><br>18.5" - 23" | • <b>Overall Seat Dimensions:</b><br>31.5"w x 14.5"d                   |
| • <b>Overall Dimensions:</b><br>33"w x 19"d     | • <b>Overall Weight:</b> 11 lbs.<br>• <b>Weight Capacity:</b> 300 lbs. |

### **Padded Transfer Bench** **9080 with Removable Back**

- Removable back
- Padded seat and back add comfort when bathing
- Non-skid rubber tips
- Converts easily for left or right hand transfers
- Latex Free
- Aluminum anodized frame



- |   |   |
|---|---|
| • <b>Seat Height Adjustment:</b><br>17.75" - 21.75" | • <b>Overall Seat Dimensions:</b><br>24"w x 15.25"d                       |
| • <b>Overall Dimensions:</b><br>29.5"w x 21.5"d     | • <b>Overall Weight:</b> 12.15 lbs.<br>• <b>Weight Capacity:</b> 300 lbs. |

### **Swivel Bath Transfer Seat** **9405**

- Swivels 360 degrees and locks into four 90 degree positions
- Allows patient to be transferred into seat and swiveled into showering position



- |  |  |
|--|--|
| • <b>Tub Width:</b> 27.5" - 34"                      | • <b>Overall Seat Dimensions:</b><br>16"w x 16"d |
| • <b>Overall Dimensions:</b><br>22.5"d x 27.5" - 34" | • <b>Overall Weight:</b> 10 lbs.                 |
| • <b>Width Between Arms:</b> 18.5"                   | • <b>Weight Capacity:</b> 250 lbs.               |

## Bucket, Lid, and Splash Guard 8450B & 8450S

- **8450B** - Bucket and lid for 8450 Bedside Commode
- **8450S** - Splash Guard for 8450 Bedside Commode



• **Approximate Volume:**  
1236 oz.

• **Overall Dimensions:**  
13" w x 8" h

## Commode Liner PA-1080



- Medical grade bag containing a super absorbent pad that quickly transitions body fluids into a gel thus completely eliminating any odors, spills, & splashes and the need for hand-cleaning
- Provides convenience & safety for Patient, Caregiver, & Family
- No more hand-cleaning of soiled pail
- No handling of feces or urine
- Eliminates odor from bodily waste
- Convenient drawstring closure for easier cleanup
- Pad absorbs 17 oz. of body fluids



**SUPER  
ABSORBENT  
PAD**

## Bedside Commode

8450

- Adjustable height
- Bucket, lid, and splash guard included
- Durable welded frame is easy to clean and maintain
- Powder coating resists rust
- Back attaches quickly with wing nuts



- |                                   |  |
|-----------------------------------|--|
| • Seat Height: 16.5" - 22.5"      | • Overall Seat Dimensions: 13.25"w x 14.25"d |
| • Overall Dimensions: 24"w x 19"d | • Overall Weight: 12 lbs.                    |
| • Width Between Arms: 17.75"      | • Weight Capacity: 350 lbs.                  |

## Folding Commode

8700

- Ideal for travel: folds and unfolds in seconds
- Bucket, lid, and splash guard included



- |   |  |
|---|--|
| • Seat Height: 15.75" - 21.75"                | • Overall Seat Dimensions: 14"w x 16"d |
| • Overall Dimensions: 21.25"w x 21"d x 25.5"h | • Overall Weight: 14 lbs.              |
| • Width Between Arms: 18"                     | • Weight Capacity: 300 lbs.            |

## Drop-Arm Commode

8900

- Push-button arm release allows for easy patient transfer
- Bucket, lid, and splash guard included
- Soft foam handles
- Available in Gray (8900W) and Chrome (8900CH)



- |                                       |  |
|---------------------------------------|--|
| • Seat Height: 19" - 23"              | • Overall Seat Dimensions: 14"w x 16.5"d |
| • Overall Dimensions: 21.5"w x 22.5"d | • Overall Weight: 22 lbs.                |
| • Width Between Arms: 18"             | • Weight Capacity: 300 lbs.              |

## Padded Drop-Arm Commode 8901W

- Push-button arm release allows for easy patient transfer
- Bucket, lid, and splash guard included
- Soft foam handles
- Padded seat and back included



- |  |   |
|--|---|
| • <b>Seat Height:</b> 20.25" - 24.5"         | • <b>Overall Seat Dimensions:</b> 16.5"w x 16.5"d |
| • <b>Overall Dimensions:</b> 21.5"w x 22.5"d | • <b>Overall Weight:</b> 23 lbs.                  |
| • <b>Width Between Arms:</b> 18"             | • <b>Weight Capacity:</b> 300 lbs.                |

## Shower Chair/Commode 8800

- Bucket can be removed without lifting user or raising seat
- Waterfall armrests and padded seat
- 4" swivel wheels with 4 locking casters (forks)
- Bucket and lid included



- |   |   |
|---|---|
| • <b>Seat Height:</b> 21.5"                         | • <b>Overall Seat Dimensions:</b> 15.5"w x 15.5"d |
| • <b>Overall Dimensions:</b> 22.5"w x 25"d x 33.5"h | • <b>Overall Weight:</b> 17 lbs.                  |
| • <b>Width Between Arms:</b> 18.25"                 | • <b>Weight Capacity:</b> 250 lbs.                |

## Deluxe Shower Chair/Commode 8801

- Bucket can be removed without lifting user or raising seat
- Waterfall armrests and padded seat
- 4" swivel wheels with 4 locking casters (forks)
- Bucket and lid included
- Removable, swing away footrests



- |   |   |
|---|---|
| • <b>Seat Height:</b> 19"                         | • <b>Overall Seat Dimensions:</b> 15.5"w x 15.5"d |
| • <b>Overall Dimensions:</b> 22.5"w x 25"d x 36"h | • <b>Overall Weight:</b> 22 lbs.                  |
| • <b>Width Between Arms:</b> 18.25"               | • <b>Weight Capacity:</b> 250 lbs.                |

# COMMODOES

## Drop-Arm Transport Chair Commode 8805

- Arms drop for easy patient transfer
- Padded seat fits over commode and converts into transport chair
- Bucket & lid included
- Removable, swing away footrests
- NOT FOR USE IN SHOWER



- Seat Height: 19.5"
- Overall Dimensions: 22.5"w x 23"d x 37.25"h
- Width Between Arms: 18.5"
- Overall Seat Dimensions: 17.75"w x 17"d
- Overall Weight: 29 lbs.
- Weight Capacity: 250 lbs.

## Bariatric Commode

8580

with Extra Wide Seat  
& Removable Back



- Durable powder-coated aluminum frame is easy to clean and maintain
- Removable back
- Bucket, lid, and splash guard included



- Seat Height: 19.75" - 23.75"
- Overall Dimensions: 33"w x 24"d x 35"h
- Width Between Arms: 26.5"
- Overall Seat Dimensions: 23.25"w x 18.5"d
- Overall Weight: 23 lbs.
- Weight Capacity: 450 lbs.

## Bariatric Commode

8582

with Extra Wide Seat



- Bucket and lid included
- Toilet Seat Opening: 8"w x 10.5"d
- Large blow molded seat provides extra support



- Seat Height: 16" - 23"
- Overall Dimensions: 26.5"w x 21.5"d x 27.5"h
- Width Between Arms: 23.5"
- Overall Seat Dimensions: 23"w x 18.5"d
- Overall Weight: 18 lbs.
- Weight Capacity: 500 lbs.



## Bariatric Commode

**8583** with Extra Wide Seat



- Arms drop for easy patient transfer
- Bucket and lid included
- Toilet Seat Opening: 9.5" w x 13" d



• <b>Seat Height Adjustment:</b> 19.5" - 23.5"	• <b>Overall Seat Dimensions:</b> 23" w x 18.5" d
• <b>Overall Dimensions:</b> 28" w x 20" d x 30" h	• <b>Width Between Arms:</b> 25"
	• <b>Weight Capacity:</b> 500 lbs.

## Bariatric Drop-Arm Commode

**8590** with Extra Wide Seat



- Arms drop for easy patient transfer
- Bucket, lid, and splash guard included
- Toilet Seat Opening: 9.5" w x 13" d
- Large padded seat for extra support



• <b>Seat Height:</b> 18.5"	• <b>Overall Seat Dimensions:</b> 26" w x 21" d
• <b>Overall Dimensions:</b> 29" w x 24" d	• <b>Overall Weight:</b> 33 lbs.
• <b>Width Between Arms:</b> 25"	• <b>Weight Capacity:</b> 800 lbs.

## TOILET ACCESSORIES

### 5" Locking Raised Toilet Seat

8355

- Extra Wide Arms!
- Adds 5" to the height of the toilet seat to aid in sitting and rising
- Front locking mechanism for easy installation



- |  |                             |
|--|-----------------------------|
| • Overall Dimensions:<br>15"w x 16.5"d | • Width Between Arms: 22"   |
| • Aperture Dimensions:<br>8"w x 9"d    | • Overall Weight: 4 lbs.    |
|  | • Weight Capacity: 300 lbs. |

### Toilet Safety Rails

8200

- One piece mounting flange for easy width adjustment
- Rails bolt securely to the toilet



- |                                       |                             |
|---------------------------------------|-----------------------------|
| • Arm Height Adjustment:<br>26" - 30" | • Overall Weight: 3 lbs.    |
| • Width Between Arms:<br>18" - 21"    | • Weight Capacity: 250 lbs. |

### Adjustable Raised Toilet Seat

8300

- 5" heavy duty support brackets with vinyl caps to protect porcelain
- Full splash guard extends within toilet basin



- |                                      |                          |
|--------------------------------------|--------------------------|
| • Seat Height Adjustment:<br>3" - 6" | • Overall Weight: 3 lbs. |
|--------------------------------------|--------------------------|

## 5" Raised Toilet Seat 8340

- Non-locking
- Extra large seating area
- Rubber pads help prevent seat from moving
- Hygienic cut out



- |  |                                     |
|--|-------------------------------------|
| • Overall Dimensions:<br>17.5"w x 17"l | • Aperture Dimensions:<br>8"w x 9"d |
| • Overall Weight: 3 lbs.               | • Weight Capacity: 300 lbs.         |

## 5" Locking Raised Toilet Seat 8350

- Adds 5" to the height of the toilet seat to aid in sitting and rising
- Front locking mechanism for easy installation



- |  |                                     |
|--|-------------------------------------|
| • Overall Dimensions:<br>15"w x 16.5"d | • Aperture Dimensions:<br>8"w x 9"d |
| • Overall Weight: 4 lbs.               | • Weight Capacity: 300 lbs.         |

## Raised Toilet Seats 8341-R & 8342-R

- 8341-R (Elongated)
- 8342-R (Standard)
- Bolts directly to the toilet for added safety
- Adds 3.5" to the height of the toilet seat to aid in sitting and rising
- Unlike most elevated seat aids, the 8342-R allows the original seat and lid to be used
- Installs easily



- |   |  |
|---|--|
| • Overall Dimensions:<br>14.5"w x 19.5"d (8341-R)<br>13.5"w x 17"d (8342-R) | • Aperture Dimensions:<br>10"w x 13.5"d (8341-R)<br>10"w x 11.5"d (8342-R) |
| • Overall Weight: 3 lbs.  | • Weight Capacity: 300 lbs.  |

## Raised Toilet Seat

### 8351 with Detachable Arms

- Adds 5" to the height of the toilet seat to aid in sitting and rising
- Front locking mechanism for easy installation



- |  |   |
|--|---|
| • Overall Dimensions:<br>15"w x 16.5"d | • Width Between Arms:<br>18" - 20"                      |
| • Aperture Dimensions:<br>8"w x 9"d    | • Overall Weight: 6 lbs.<br>• Weight Capacity: 300 lbs. |

## 5" Locking Raised Toilet Seat

### 8352

- Adds 5" to the height of the toilet seat to aid in sitting and rising
- Front locking mechanism for easy installation



- |                                       |   |
|---------------------------------------|---|
| • Overall Dimensions:<br>17"w x 16"d  | • Overall Weight: 5 lbs.<br>• Weight Capacity: 300 lbs. |
| • Aperture Dimensions:<br>8"w x 9.5"d |   |

## 5" Raised Toilet Seat

### 8353 with Detachable Arms

- Adds 5" to the height of the toilet seat to aid in sitting and rising
- Front locking mechanism for easy installation



- |                                      |   |
|--------------------------------------|---|
| • Overall Dimensions:<br>20"w x 16"d | • Width Between Arms: 17"                               |
| • Aperture Dimensions:<br>8"w x 9"d  | • Overall Weight: 6 lbs.<br>• Weight Capacity: 300 lbs. |

## Male & Female Urinals

### 8105M-R & 8106F-R

- Spill resistant design with cover to prevent odor (8105M-R only)
- Contoured design ensures a complete and secure seal during use
- Perfect for bedside or use in vehicle
- Grip handle allows for use in multiple positions for bedridden patients
- Durable shatter resistant plastic design is easy to empty and clean



## Sitz Bath

### 8101-R

- Convenient On/Off control clip
- Fits most standard toilets
- Aids in relieving the discomfort of perinea conditions such as hemorrhoids, menstrual cramps, bladder or prostate infections
- Includes 2000ML solution bag



## Bedpan

### 8107-R



- For patients that have difficulty getting out of bed
- Durable molded plastic construction and conventional style
- Odor resistant and easy to clean

### Fracture Bedpan

8108-R

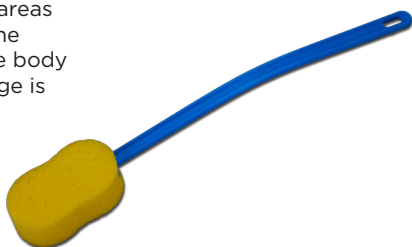


- Tapered lower front for easier positioning
- Durable molded plastic construction and conventional style
- Odor resistant and easy to clean

### Bath Sponge

PA-1004 with Deluxe Long Handle

- Assists with washing hard-to-reach areas and flexes to the contours of the body
- The bath sponge is 24" long



### Padded Toilet Seat Risers

2629-R (2") & 2630-R (4")



- High density foam minimizes pressure on sensitive areas
- Attaches easily to toilet seat with four adjustable Velcro straps to reduce shifting
- Easy to clean vinyl surface
- Fits most toilet seats
- Dimensions: 15.75"w x 4"h x 14"d

## Arm Cast Protector

- Reusable long plastic cast and bandage protector with a 6" diameter
- Plastic ring and diaphragm create a tight seal that prevents water from entering inside
- Keeps water from casts or bandages when showering or bathing
- Latex free

**Pediatric:** 8113-R

**Small:** 8115-R

**Large:** 8116-R



## Leg Cast Protector

- Reusable long plastic cast and bandage protector with a 6" diameter
- Plastic ring and diaphragm create a tight seal that prevents water from entering inside
- Keeps water from casts or bandages when showering or bathing
- Latex free

**Pediatric:** 8116-R

**Small:** 8117-R

**Large:** 8118-R



# Bathroom 365



- Be proactive. Over 60% of falls occur at home, with the majority occurring in the bathroom.
- Use an elevated toilet seat on the commode and a tub grab bar to get in and out of the bathtub.
- A bath bench with back provides comfort and safety when bathing or showering. This should be used with an 84" long hand held shower.
- Use a non-skid bath mat or adhesive strips in the bathtub and the shower floor.
- Never lock your bathroom door. It could prevent help from reaching you promptly. Instead, use a Do Not Disturb sign.

Consult your physician before  
use of any medical products



as unique as you are

1-800-557-6682

[www.NovaMedicalProducts.com](http://www.NovaMedicalProducts.com)

Authorized NOVA Dealer