



LIFESTAND
PERMOBIL GROUP



Get Vertical

THE HELIUM LS & LSE are ideal for people who need to stand up, but are unable to do so on their own. The LS offers a manual standing feature, while the LSE provides a power function.

Both chairs are constructed of innovative, high-tech materials and are ergonomically-friendly. Armrests, knee supports and a chest belt help ensure comfort and stability, while a rear axle center of gravity adjustment provides superior maneuverability.

The LS and LSE allow users to participate in everyday activities with their family, friends and co-workers. The chairs also support an array of medical benefits, such as: increased muscle tone; strengthened bones; improved circulation and digestion; and reduced spasticity.



HELIUM LSE



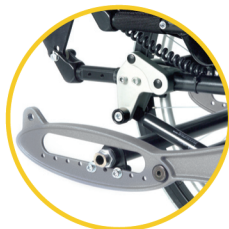
GET VERTICAL – Glide your way smoothly and easily to a comfortable and secure standing position in this attractive and transportable stand-up wheelchair.



LIFESTAND
PERMOBIL GROUP

HELIUM LS
HELIUM LSE

STANDING INDEPENDENCE



Rear axle center of gravity adjustment for superior maneuverability



Secure & comfortable knee blocks easily swing out of the way



Sturdy, flip-up armrests provide torso stability & obstacle-free transfer (standard on the LSE)



Electronic actuator lets you power up to a standing position (standard on the LSE)



Patented back angle compensation system allows for proper positioning of the torso when standing

FOOTREST OPTIONS



Fixed, dual, flip up footplates



Swing away, one-piece, flip up footplate

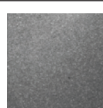


Fixed, one-piece, non-flip up footplate



Swing away, dual, flip up footplates

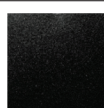
COLOR OPTIONS



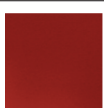
Silver Metallic



Blue



Black



Red



HELIUM LS

MANUALLY PROPELLED, MANUAL STAND-UP

Standing in the LS model is accomplished by lifting the Arm Loop Levers. This activates dual gas cylinders integrated into the frame, which assist in standing up.

Seat Width	Seat Front to Floor Height	Rear Wheel Diameter	Front Wheel Diameter	Overall Width (0° camber)	Overall Width (3° camber)	Seat Depth	Overall Length Seated	Overall Length Standing	Backrest Height	Overall Height (w/o push handles)	Max User Weight	Total Weight*	Weight of Heaviest Element
36cm/14"	51cm/20"	60cm/24"	15cm/6"	57cm/22.5"	63cm/25"	Adjustable 41cm/16" to 55cm/21.5"	Adjustable 89cm/35" to 107cm/42"	Adjustable 94cm/37" to 112cm/44"	32cm/12.5" to 52cm/20.5"	84cm/33" to 104cm/34"	120 Kilos/ 265 lbs	LS From 25 Kilos/ 55 lbs	LS From 20 Kilos/ 44 lbs
40cm/16"	51cm/20"	60cm/24"	15cm/6"	61cm/24"	67cm/26.5"							LSE From 32 Kilos/ 71 lbs	LSE From 27 Kilos/ 60 lbs
44cm/17.5"	51cm/20"	60cm/24"	15cm/6"	65cm/25.5"	71cm/28"								
48cm/19"	51cm/20"	60cm/24"	15cm/6"	69cm/27"	75cm/29.5"								

*dependent on sizes, types of wheels and options

LIFESTAND PERMOBIL GROUP

300 Duke Drive • Lebanon, Tennessee 37090 • 800.736.0925 • www.lifestand.eu

HELIUMLS/LSE030110