

**QUANTUM**  
**REHAB®**

**MOVING FORWARD**

[www.quantumrehab.com](http://www.quantumrehab.com)



Q6 POWER CHAIR SERIES

Quantum® 600

The Quantum® 600 delivers the stability of patent pending Mid-Wheel 6® design and superb maneuverability, along with a powerful drivetrain for enhanced performance and torque. The Quantum 600 accepts a wide range of seating and electronic options, making it fully rehab capable.



- FEATURES
- User weight capacity of 300 lbs.
  - Mid-Wheel 6® allows six wheels on the ground for stability
  - Patent pending ATX Suspension (Active-Trac® with extra stability) incorporates front OMNI-Casters for enhanced performance over more varied terrain
  - Compatible with TRU-Balance® Power Positioning
  - Maximum speed of 6 mph with optional high speed motor package
  - Standard 8 amp, off-board charger

Quantum® 614

The Quantum® 614 combines outstanding performance and superb maneuverability in a package that delivers exceptional value. Enhanced in-line motors and advanced ATX Suspension make the Quantum 614 truly innovative. Plus, the Quantum 614 is fully compatible with a broad range of seating and electronics options for limitless rehab capability.



- FEATURES
- User weight capacity of 300 lbs.
  - Mid-Wheel 6® allows six wheels on the ground for stability
  - Patent pending ATX Suspension (Active-Trac® with extra stability) incorporates front OMNI-Casters for enhanced performance over more varied terrain
  - Compatible with TRU-Balance® Power Positioning
  - 75 amp Q-Logic NE controller
  - Standard 5 amp, off-board charger
  - Easy rear access to batteries

Q640

The Q640 delivers exceptional performance and maneuverability and features high speed motors for an increased maximum speed of up to 6 mph. The Q640 accepts a broad range of seating and electronics options for full rehab capability.



- FEATURES
- User weight capacity of 300 lbs.
  - Mid-Wheel 6® allows six wheels on the ground for stability
  - Patent pending ATX Suspension (Active-Trac® with extra stability) incorporates front OMNI-Casters for enhanced performance over more varied terrain
  - Compatible with TRU-Balance® Power Positioning
  - Maximum speed of 6 mph
  - Standard 8 amp, off-board charger

Quantum® 610

The compact Quantum® 610 is the ultimate choice for users who demand the superb stability of patent pending Mid-Wheel 6® design and tight-quarter maneuverability. Highly adaptable, the Quantum 610 accepts a wide range of seating and electronic options while its powerful drivetrain delivers high-performance torque.



- FEATURES
- User weight capacity of 300 lbs.
  - Mid-Wheel 6® allows six wheels on the ground for stability
  - Patent pending ATX Suspension (Active-Trac® with extra stability) incorporates front OMNI-Casters for enhanced performance over more varied terrain
  - Compatible with TRU-Balance® Power Positioning
  - Maximum speed of 4 mph
  - Standard 5 amp, off-board charger

Quantum® 6000Z

The Quantum® 6000Z utilizes powerful 4-pole motors for maximum torque and patent pending Mid-Wheel 6® design for aggressive outdoor performance and precision indoor maneuverability. The Quantum 6000Z accepts a broad range of exclusive seating and electronics options for unmatched adaptability and rehab capability.



- FEATURES
- User weight capacity of 300 lbs.
  - Mid-Wheel 6® allows six wheels on the ground for stability
  - Patent pending ATX Suspension (Active-Trac® with extra stability) incorporates front OMNI-Casters for enhanced performance over more varied terrain
  - Compatible with TRU-Balance® Power Positioning
  - Maximum speed of 8 mph with optional high speed motor package
  - Standard 8 amp, off-board charger
  - Available with Accu-Trac Advanced Tracking Technology

Q6400Z

The powerful Q6400Z is designed for aggressive performance and exceptional maneuverability with high speed motors for an enhanced top speed of up to 8 mph. The Q6400Z accepts a broad range of seating and electronics options for full rehab capability.



- FEATURES
- User weight capacity of 300 lbs.
  - Mid-Wheel 6® allows six wheels on the ground for stability
  - Patent pending ATX Suspension (Active-Trac® with extra stability) incorporates front OMNI-Casters for enhanced performance over more varied terrain
  - Compatible with TRU-Balance® Power Positioning
  - Maximum speed of 8 mph
  - Standard 8 amp, off-board charger

Q6400

The Q6400 features excellent overall performance with high speed motors that deliver an enhanced top speed of up to 8 mph. The highly adaptable Q6400 accepts a complete range of electronics and seating options.



- FEATURES
- User weight capacity of 300 lbs.
  - Mid-Wheel 6® allows six wheels on the ground for stability
  - Patent pending ATX Suspension (Active-Trac® with extra stability) incorporates front OMNI-Casters for enhanced performance over more varied terrain
  - Compatible with TRU-Balance® Power Positioning
  - Maximum speed of 8 mph
  - Standard 8 amp, off-board charger



Bryan Anderson, Quantum Rehab® Spokesperson and Iraq War Veteran



MID-WHEEL DRIVE POWER CHAIR SERIES

Quantum® 1103 Ultra

The Quantum® 1103 Ultra's compact, sporty, mid-wheel drive design offers excellent tight quarter maneuvering and performance features like Standard Active-Trac® Suspension to provide enhanced outdoor capability. The Quantum 1103 Ultra delivers full rehab adaptability and stability on a very compact frame.



- FEATURES**
- User weight capacity of 300 lbs.
  - Active-Trac® Suspension for outstanding outdoor performance
  - Powerful two-motor, patented mid-wheel drive design
  - Low center of gravity design delivers a very smooth and stable ride
  - 10" knobby drive wheels and optimum weight distribution
  - Speed range adjustable up to 4 mph
  - 5 amp off-board battery charger

Quantum® 1121

The Quantum® 1121 combines outstanding performance with sleek mid-wheel drive design for superb maneuverability. Fully rehab capable, the 1121 accepts an excellent range of electronic and seating options.



- FEATURES**
- Narrow width of 23.8" with a turning radius of 22.5"
  - Patented mid-wheel drive design offers exceptional handling
  - Active-Trac® Suspension for outstanding outdoor performance
  - Accepts a full range of rehab seating, including power tilt and recline
  - Easy front access to batteries without removing the seat or shroud

Quantum® 600 XL (HD)

The Quantum® 600 XL features patent pending Mid-Wheel 6® design, an increased weight capacity of 400 lbs. and enhanced seating available up to 24" x 24". The Q600 XL is the perfect heavy-duty choice for those who demand maximum stability and true all around performance.



- FEATURES**
- Weight capacity of 400 lbs.
  - Mid-Wheel 6® allows six wheels on the ground for stability
  - Patent pending ATX Suspension (Active-Trac® with extra stability) incorporates front OMNI-Casters for enhanced performance over more varied terrain
  - Compatible with TRU-Balance® Tilt up to 24" W x 24" D
  - Powerful Glide motors for added power and torque
  - Standard 8 amp, off-board charger

Quantum® 6000Z HD

The Quantum® 6000Z HD utilizes powerful 4-pole motors for maximum torque and patent pending Mid-Wheel 6® design for aggressive outdoor performance and precision indoor maneuverability. The Quantum 6000Z HD accepts a broad range of exclusive seating and electronics options for unmatched adaptability and rehab capability.



- FEATURES**
- User weight capacity of 450 lbs.
  - Mid-Wheel 6® allows six wheels on the ground for stability
  - Patent pending ATX Suspension (Active-Trac® with extra stability) incorporates front OMNI-Casters for enhanced performance over more varied terrain
  - Compatible with TRU-Balance® Power Tilt (up to 400 lbs.)
  - Standard 8 amp, off-board charger

REAR-WHEEL DRIVE POWER CHAIR SERIES

Quantum® R-4000

The Quantum® R-4000 rear-wheel drive power chair delivers aggressive, terrain-gripping torque and is available with an optional high speed motor package for a top speed of up to 8 mph. The innovative, compact design of the Quantum R-4000 makes it highly maneuverable in tight spaces without sacrificing traditional rear-wheel drive performance.



- FEATURES**
- Easy operation results in a short learning curve
  - Narrow 25.5" width and compact 33" length
  - Outstanding tight-space maneuverability
  - Sport-Trac Suspension
  - Powerful motors for aggressive performance and terrain-gripping torque
  - 3-point seat mount for ease of adjustment and addition of optional components
  - Easy rear access to batteries

R-4400

The rear-wheel drive R-4400 features a compact design for superb maneuverability and a maximum speed of up to 8 mph with optional high-speed motors. The R-4400 accepts a broad range of seating and electronic options for unmatched adaptability and rehab capability.



- FEATURES**
- Easy operation results in a short learning curve
  - Narrow 25.5" width and compact 33" length
  - Outstanding tight-space maneuverability
  - Sport-Trac Suspension
  - Powerful motors for aggressive performance and terrain-gripping torque
  - 3-point seat mount for ease of adjustment and addition of optional components
  - Easy rear access to batteries

Quantum® 1420 and Q1424

The Quantum® 1420 and Q1424 accept a full range of rehab seating and electronics options for a balanced blend of rehab versatility and high performance, courtesy of patented mid-wheel drive technology and Active-Trac® Suspension.



The Q1424's high speed motors offer an increased maximum speed of up to 6 mph.

- FEATURES**
- Weight capacity up to 500 lbs. (450 lbs. on Q1424)
  - Patented two-motor, mid-wheel drive design provides superb power and acceleration
  - Active-Trac® and rear caster suspension for outstanding outdoor performance
  - Adjustable front anti-tips to meet your preferences and terrain challenges
  - Standard 8 amp, off-board charger

Quantum® 1650

The Quantum® 1650 offers heavy-duty construction and performance components including upgraded motors, a reinforced frame, enhanced springs on the front anti-tip wheels and the use of two Group 24 batteries. This allows the 1650 to accommodate a maximum weight capacity of 650 lbs.



- FEATURES**
- Heavy-duty, in-line dual motors; patented mid-wheel drive design
  - Reinforced frame and heavy-duty springs on the front anti-tip wheels
  - Weight capacity of up to 650 lbs.
  - Accepts larger seating systems for maximum comfort
  - 8 amp, off-board battery charger
  - 16" drive wheels and 9" pneumatic caster wheels for maximum stability
  - Top speed up to 5 mph
  - Easy front-access dual freewheel levers



**DON'T FORGET THE CUSHION!**  
Spectrum Foam cushion available in sizes up to 32" x 28" with 650 lbs. weight capacity.



Q6 PEDIATRIC POWER CHAIR SERIES

SEATING SYSTEMS

Quantum® 6000Z

The Quantum® 6000Z delivers grown-up power and performance in an easy-to-use package that's up for any challenge a kid can put it through. Limitless rehab capability, powerful 4-pole motors and the unmatched maneuverability of patent pending Mid-Wheel 6® design, make the Quantum 6000Z an excellent choice for the classroom, playground and beyond.



- FEATURES**
- Mid-Wheel 6® allows six wheels on the ground for stability
  - Patent pending ATX Suspension (Active-Trac® with extra stability) incorporates front OMNI-Casters for enhanced performance over more varied terrain
  - Compatible with TRU-Balance® Power Positioning
  - Maximum speed of 8 mph with optional high speed motor package
  - Standard 8 amp, off-board charger



Quantum® 600

Compact, patent pending Mid-Wheel 6® design and powerful Glide motors let the Quantum® 600 keep up with today's active kids. The Quantum 600 is versatile enough to meet even the most unique pediatric requirements while delivering the high performance needed to keep up with a jam-packed schedule.



- FEATURES**
- Mid-Wheel 6® allows six wheels on the ground for stability
  - Patent pending ATX Suspension (Active-Trac® with extra stability) incorporates front OMNI-Casters for enhanced performance over more varied terrain
  - Compatible with TRU-Balance® Power Positioning
  - Maximum speed of 6 mph with optional high speed motor package
  - Standard 8 amp, off-board charger

Quantum® 610

The Quantum® 610's highly compact size provides easy access to kid-sized spaces, combined with the true all around performance of patent pending Mid-Wheel 6® design. Glide motors and excellent rehab capability make the Quantum 610 a powerful and complete pediatric power chair option.



- FEATURES**
- Mid-Wheel 6® allows six wheels on the ground for stability
  - Patent pending ATX Suspension (Active-Trac® with extra stability) incorporates front OMNI-Casters for enhanced performance over more varied terrain
  - Compatible with TRU-Balance® Power Positioning
  - Maximum speed of 4 mph
  - Standard 5 amp, off-board charger



Synergy® Seating System

The Quantum® Synergy® Seating System offers a clean, streamlined appearance and unparalleled ease of adjustment. The seating system's unique design allows for height, width, depth and back angle adjustments to be made quickly and easily in the field. The Synergy Seat interfaces with most types of seat and back cushions, and was designed to be the most user-friendly system available today.

- FEATURES**
- Easily adjustable and versatile design that can grow with the client
  - Easy customization
  - Several width/depth adjustment packages ranging from 10" to 24"
  - Accepts a wide variety of after-market seats and backs
  - Heavy Duty option provides a weight capacity of 650 lbs. and seating up to 32" x 28" (model specific)

TRU-Balance® Power Articulating Foot Platform

- 8" of articulation
- 90 - 170 degrees of elevation
- 6-way adjustable calf pads
- Bi-lateral, angle adjustable split foot platform



TRU-Balance® Power Articulating/Elevating Leg Rests

- Standard at a 70 or 80 degree angle
- Actuator is mounted to the outside of leg rest and will not increase the seat-to-floor height of the seating system
- Connected with a ¼" headphone-style jack connector (pull out in order to release)
- Standard with depth and height adjustable calf pads
- Standard with 4" articulation (optional 6" articulation)
- Available as drop-in or swing-away



TRU-Balance® Power Positioning System

The TRU-Balance® Power Positioning System brings the next generation of power positioning innovation from Quantum Rehab® together in one very adaptable, highly attractive package. TRU-Balance delivers lower seat-to-floor heights, increased and simplified means of adjustment and easy service access to electronics.

- POWER TILT FEATURES**
- 55 degrees of tilt
  - Lower standard seat-to-floor height
  - Simplified width and depth adjustments
  - Maintains center of gravity shift
  - New safety switches

- POWER RECLINE FEATURES**
- 95 to 168 degrees of recline
  - 300 lbs. weight capacity
  - Does not increase seat-to-floor height
  - Standard shear reduction and reclining armrests

TRU-Balance® Lift & Tilt

- Delivers 10" of elevation with 50 degrees of tilt
- Offers maximum versatility and ease of adjustment
- Available with power recline, power front riggings and TRU-Comfort seating
- 300 lbs. weight capacity



**DON'T FORGET THE CUSHION!**  
Synergy® cushions available in sizes as small as 10" x 10"



# SYNERGY® CUSHIONS AND BACKS

## Synergy® Simplicity™

Tremendous comfort and moderate pressure management

### FEATURES

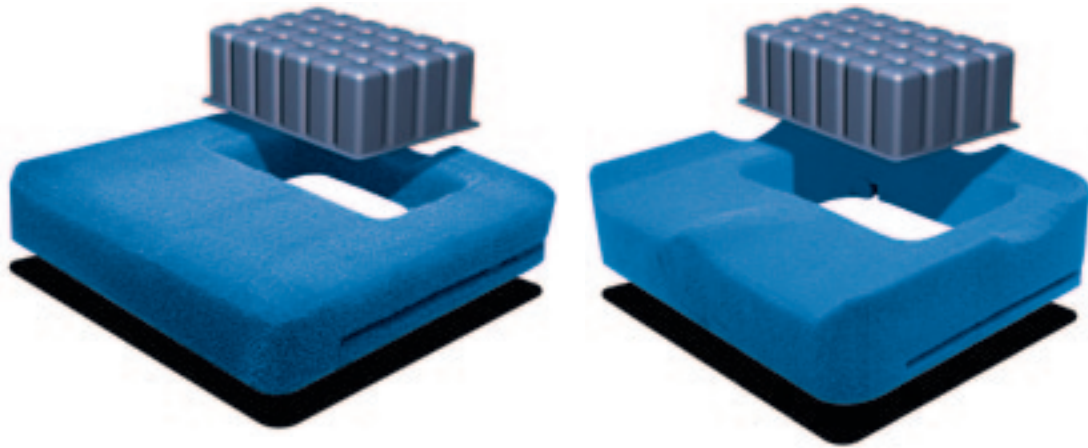
- High-density polyurethane foam construction
- Exclusive wrap-and-lift design for pressure management
- Coccyx and sacral relief
- Four-way stretch, fluid resistant upper cover

## Synergy® Spectrum®

Customized comfort and superb positioning and pressure management

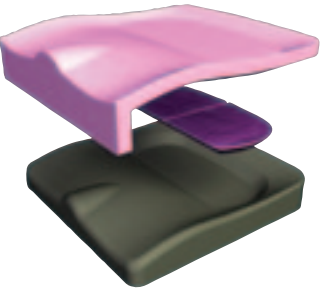
### FEATURES

- Extra deep well
- Choice of twin-cell lightweight fluid or viscoelastic foam insert
- Viscoelastic top layer
- 2-cover system to prevent shearing with interior liner
- 650 lbs. weight capacity with viscoelastic foam insert



CONTOUR BASE

Available in sizes ranging from 10" x 10" up to 32" x 28"



Available in sizes as small as 10" x 10"

## Synergy® Solution®

Three component design for pressure management, positioning and long-lasting comfort

### FEATURES

- Exclusive wrap-and-lift design for pressure management
- Twin-cell gel insert
- Viscoelastic top layer
- 2-cover system to prevent shearing with interior liner

## Synergy® Solution® 1

Innovative, two layered design for exceptional pressure management and positioning

### FEATURES

- High-density polyurethane foam construction
- Coccyx and sacral relief
- Soft gel top layer for skin protection
- Four-way stretch, fluid resistant upper cover

## Synergy® Spectrum® Air

4" multi-cell insert and exclusive Sil-Air silicone base deliver unprecedented stability

### FEATURES

- Multi-cell air bladder provides superb pressure relief
- Sil-Air silicone foam base delivers excellent support and stability
- Unique air-flow properties help keep skin cool and dry
- Precision air volume adjustment prevents bottom-out or high pressure from over inflation
- Standard 3 mm ACM solid seat insert
- The Sil-Air base features an antibacterial agent that greatly reduces odor and is fully waterproof



## Synergy® SHAPE

Contoured comfort and superb pressure management

### FEATURES

- Ergonomically contoured
- High density base foam with a soft viscoelastic upper layer
- One hand quick release
- Solid locking durable hardware
- Highly adjustable in depth, width and back angle
- Striking style, adjustable comfort and solid support



## TRU-Comfort™

Striking style, adjustable comfort and solid support

### FEATURES

- Ultrasoft, leather-like cover
- High-density HR polyurethane base for long lasting comfort
- Viscoelastic foam top layer to manage pressure, promote proper circulation and provide comfort
- Easily added to TRU-Balance® and other Synergy® seats
- Adjustable lumbar support and lateral bolsters to dial in positioning comfort
- Modular seating components allow use of alternate seating cushions



## TRU-Comfort™ Plus

Added support and stylish design

### FEATURES

- All of the benefits of TRU-Comfort Seating
- Four-way stretch, fluid resistant cover
- Additional 1/2" of viscoelastic foam in seat cushion for maximum comfort and pressure management
- Added support and stylish design



The Q-Logic Drive Control System by Quantum Rehab® is the most advanced power chair electronics package available. The Q-Logic EX Series creates an adaptable, expandable control system that serves even the most complex of needs while delivering a host of exclusive features.

FEATURES

- Color LCD screen displays system functions clearly at a glance
- On-screen data includes battery gauge, speedometer, odometer, real-time clock, mode settings, speed dial settings, drive status and seat functions
- Keypad features easy-access power, mode and speed dial functions, as well as a horn and menu buttons
- Auxiliary jacks are built-in for the use of additional adaptive switch input devices
- The reminder feature allows clinicians and providers to set on-screen alerts that routinely remind the user to take medication, perform weight shifts, recharge batteries, etc.
- Fully programmable drive profiles allow the tailoring of the power chair's handling to the widest ranges of needs, including advanced features of tremor dampening and latched drive
- Software-based system allows for updates to be quickly downloaded



Q-Logic EX Joystick



Q-Logic EX Enhanced Display

Full-Color Display Screens



Drive Screen   Seating Screen   Speed Display   Menu Screen   Reminder Screen   Latched Screen

Optional® Modules



EX Stand-Alone Joystick (SAJ) / EX Attendant Joystick   EX Joystick for LED lights   Advanced Actuator Module (AAM)   Sip and Puff   Environmental Control Unit (ECU)

Programming Devices

Q-Logic NE Series



Hand-held Programmer   PC Programmer   Q-Logic NE   Q-Logic NE+

Drive Screen



PC Mouse Emulator

Non-Expandable

Expandable



NE and NE+   PG VR2 (4-key)   PG VR2 (6-key)   PG VR2 (9-key)



Q-Logic EX Joystick   Q-Logic EX Joystick with Lights   Q-Logic EX Enhanced Display   Q-Logic EX Stand Alone Joystick/ EX Attendant Joystick

Multi-Switch Systems



TASH Star Board   TASH Penta Switch   TASH Waferboard   Switch-It Lap Tray   TASH Mini Joystick with Push   ASL 3-Switch Head Array   3-Switch Stealth Ultra Head Array   Switch-It Head Array (3, 4 or 5 switch)

Proportional Drive Controls



ASL Micro Extremity Control   Switch-It Proportional Joystick   Finger Steering   HMC Mini Joystick   Stealth Mushroom Joystick   ASL Rim Control   Switch-It Touch Pad

Single Switch



TASH Tip Switch   TASH Pillow Switch   TASH Trigger Switch   Switch-It Microtouch   Buddy Button   Egg Switch   MicroLite Switch   Switch-It Uniwobble Switch

Sip-N-Puff Options

Additional Options



Therafin Whisper-Lite Sip-N-Puff Hardware   ASL Sip-N-Puff Head Array   Switch-It Sip-N-Puff with Opti-Stop



ASL Remote Stop Switch   Switch-It Remote Stop Switch   TASH Relax II Infrared Interface Module   Joystick Handles



LITESTREAM® XF

The Litestream® XF ultralight manual wheelchair uses a unique, innovative, rigidizing double X folding frame that delivers the versatility and performance of a rigid frame while folding to a width of only 9" for easy transport. The Litestream XF accepts a broad selection of accessories to meet a wide variety of needs and personal preferences while remaining an excellent overall value. The Litestream XF is also available in an HD configuration that weighs just 39 lbs. and features a cane-to-cane rigidizing bar for added stability.



HD configuration

Rear Wheels

Casters

Tires



20", 22", 24", 25" and 26" high-performance Spinerigy® wheels feature double-wall rims, with straight-pull spokes for reduced weight and optimal durability



22", 24", 25" & 26" Spinerigy Light Extreme 12 spoke PBO Fiber wheels

AVAILABLE COLORS:



24", 25" and 26" Spinerigy Sport Light Extreme 24 spoke PBO Fiber wheels

AVAILABLE COLORS:



20", 22", and 24" Skyway Tuff composite mag wheels are exceptionally durable and low maintenance



24" heavy duty Skyway Tuff composite mag wheels with aluminum handrim



Magic Wheels feature two gears to address real-life situations – 1st gear, for level ground and 2nd gear, providing a 100-percent increase in hill climbing torque



4", 5", 6", & 8" composite casters feature precision bearings and long-life poly tires



5" and 6" soft-roll casters smooth lumps and bumps in everyday use



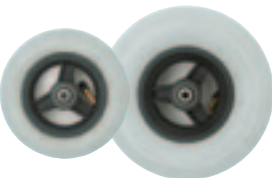
5" aluminum casters with precision bearings and polyurethane tires



4" light-up casters



4" colored casters available in red, blue, green, yellow, orange or clear



6" and 8" pneumatic casters



24" and 26" Aggressive Knobby Tire



20", 22", 24" and 26" Everyday Gray Tire



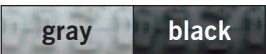
20", 22", 24" and 25" Polyurethane Tire (24" also available in light gray)



22", 24", 25" and 26" 110 PSI Primo Tire



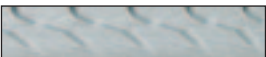
24" and 26" 110 PSI Primo Colored Tire



26" Kenda Mountain Bike Knobby Tires



24" and 26" Schwalbe Marathon Plus Evolution



24" and 26" Schwalbe Marathon Plus

Rear Wheels



20", 22", 24", 25" and 26" Projection Handrim (vertical or 45° oblique)



24" Spinerigy FlexRims



22", 24", 25" and 26" Natural-Fit and 24" Natural-Fit LT Handrim (available in standard or super grip)

(Aluminum, vinyl coated & chrome handrims also available but not shown)

Forks



Frog Legs suspension fork



8" fork Available as quick release or high angle bolt-on



5" fork



60mm fork (for use with 8" pneumatic casters only)

Wheel Locks



Pull-to-lock



Push-to-lock



Scissor lock



Pull-to-lock with extension



Push-to-lock with extension

Leg rests



Elevating bi-directional leg rests with swing-away calf pads



60°, 70°, 70° tapered, 80° and 90° aluminum bi-directional swing-away leg rests



10° comfort adjust footplates in 4.25", 5" and 6" widths



Angle adjustable footplates in 5.5", 6.5" and 7.5" widths



Nylon heel loops

Back Options



Depth adjustable frame option with fold forward back canes



Tension-adjustable upholstery



Standard nylon sling



Synergy® SHAPE back

Transit Securement



The Transit Securement Package allows convenient securement of Litestream XF for safe transport. For additional information, please refer to the Transit Securement Package brochure.

Accessories and Personalization



Height-adjustable anti-tips



Composite side guards



Aluminum side guards



Spoke protector



Custom embroidery (Also available: Navy, Air Force, Marines, Coast Guard and Purple Heart)



Case Logic underseat organizer bag



Nylon backpack

Armrests



Tubular, swing-away, desk-length armrests (shown with optional gel arm covers)



Height-adjustable, flip-back, dual post armrests (desk or full length)



Locking or non-locking, flip-up armrests (for use with depth adjustable option only)



Height-adjustable drop-in armrests (desk or full length)

	Compact Mid-Wheel Drive	Mid-Wheel Drive	Q6 Power Chair Series									Mid-Wheel Drive Bariatric			Rear-Wheel Drive	
	QUANTUM® 1103 ULTRA	QUANTUM® 1121	QUANTUM® 614	QUANTUM® 610	QUANTUM® 600	Q640	QUANTUM® 600 XL (HD)	Q6400	QUANTUM® 6000Z	Q6400Z	Q6000Z HD	QUANTUM® 1420	Q1424	QUANTUM® 1650	QUANTUM® R-4000	R-4400
DRIVE WHEELS	10" PNEUMATIC <sup>1</sup>	14" PNEUMATIC <sup>1</sup>	14" SOLID	10" PNEUMATIC <sup>1</sup>	14" PNEUMATIC <sup>1</sup>	14" PNEUMATIC <sup>1</sup>	14" SOLID	14" PNEUMATIC <sup>1</sup>	14" PNEUMATIC <sup>1</sup>	14" PNEUMATIC <sup>1</sup>	14" PNEUMATIC <sup>1</sup>	16" PNEUMATIC <sup>1</sup>	16" PNEUMATIC <sup>1</sup>	16" PNEUMATIC <sup>1</sup>	14" PNEUMATIC <sup>1</sup>	14" PNEUMATIC <sup>1</sup>
	10" SOLID <sup>2</sup>	14" SOLID <sup>2</sup>		10" SOLID <sup>2</sup>	14" SOLID <sup>2</sup>	14" SOLID <sup>2</sup>		14" SOLID <sup>2</sup>	14" SOLID <sup>2</sup>	14" SOLID <sup>2</sup>	14" SOLID <sup>2</sup>	16" SOLID <sup>2</sup>	16" SOLID <sup>2</sup>	16" SOLID <sup>2</sup>		
CASTER WHEELS	8" SOLID	8" SOLID	FRONT: 6" SOLID OMNI REAR: 6" SOLID OMNI	FRONT: 5" SOLID OMNI REAR: 6" SOLID OMNI	FRONT: 5" SOLID OMNI REAR: 6" SOLID OMNI	FRONT: 5" SOLID OMNI REAR: 6" SOLID OMNI	FRONT: 5" SOLID OMNI REAR: 6" SOLID OMNI	FRONT: 5" SOLID OMNI REAR: 6" SOLID OMNI	FRONT: 6" SOLID OMNI REAR: 6" SOLID OMNI	FRONT: 6" SOLID OMNI REAR: 6" SOLID OMNI	FRONT: 6" SOLID OMNI REAR: 6" SOLID OMNI	9" PNEUMATIC <sup>1</sup> 9" SOLID <sup>2</sup>	9" PNEUMATIC <sup>1</sup> 9" SOLID <sup>2</sup>	9" PNEUMATIC <sup>1</sup> 9" SOLID <sup>2</sup>	9" PNEUMATIC <sup>1</sup> 8" OR 9" SOLID <sup>2</sup>	9" PNEUMATIC <sup>1</sup> 8" OR 9" SOLID <sup>2</sup>
ANTI-TIP WHEELS	5" SOLID	6" SOLID	N/A	N/A	N/A	N/A	N/A	N/A	N/A	N/A	N/A	8" SOLID	8" SOLID	8" SOLID	4" SOLID	4" SOLID
MAXIMUM SPEED <sup>9</sup>	Up to 4 mph	Up to 5 mph	Up to 5 mph	Up to 4 mph	Up to 5 mph <sup>1</sup> / 6 mph <sup>2</sup>	Up to 6 mph	Up to 4 mph	Up to 8 mph	Up to 6 mph <sup>1</sup> / 8 mph <sup>2</sup>	Up to 8 mph	Up to 4.5 mph	Up to 4.5 mph <sup>3</sup> / 6 mph <sup>4</sup>	Up to 6 mph	Up to 5 mph	Up to 5 mph <sup>1</sup> /6 mph <sup>2</sup> /8 mph <sup>2</sup>	Up to 6 mph <sup>1</sup> / 8 mph <sup>2</sup>
GROUND CLEARANCE	2.5"	3.5"	2.25"	2.5"	3"	3"	3"	3"	3.5"	3.5"	3.5"	4.5"	4.5"	4.25"	2.625"	2.625"
TURNING RADIUS <sup>10</sup>	20.75"	22.5"	20"	21.25"	20"	20"	20"	22"	22.5"	22.5"	22.5"	25.75"	25.75"	26.25"	23.5"	23.5"
OVERALL LENGTH <sup>10</sup>	35.5"	38.125"	35.5"	34.75"	36.5"	36.5"	37.5"	37"	36"	36"	36"	46"	46"	47"	33"	33"
OVERALL WIDTH	23"	23.8"	25.125"	23.25"	23"	23"	23"	25.875"	25.875"	25.875"	25.875"	27.25"	27.25"	30.375" <sup>19</sup>	25.5"	25.5"
SYNERGY® AND TRU-BALANCE® ALLOWABLE SIZES <sup>28</sup>																
SYNERGY® SEAT	WIDTH: 10" - 20" DEPTH: 10" - 20"	WIDTH: 10" - 20" DEPTH: 10" - 20"	WIDTH: 10" - 22" DEPTH: 10" - 22"	WIDTH: 10" - 20" DEPTH: 10" - 20"	WIDTH: 10" - 20" DEPTH: 10" - 20"	WIDTH: 10" - 20" DEPTH: 10" - 20"	WIDTH: 10" - 24" DEPTH: 10" - 24"	WIDTH: 10" - 22" DEPTH: 10" - 20"	WIDTH: 10" - 24" DEPTH: 10" - 24"	WIDTH: 10" - 24" DEPTH: 10" - 24"	WIDTH: 10" - 24" DEPTH: 10" - 24"	WIDTH: 10" - 24" DEPTH: 10" - 24"	WIDTH: 10" - 24" DEPTH: 10" - 24"	WIDTH: 20" - 32" DEPTH: 18" - 28"	WIDTH: 10" - 20" DEPTH: 10" - 20"	WIDTH: 10" - 20" DEPTH: 10" - 20"
POWER TILT	WIDTH: 14" - 20" <sup>20</sup> DEPTH: 14" - 20"	WIDTH: 14" - 20" DEPTH: 14" - 20"	WIDTH: 14" - 22" DEPTH: 14" - 22"	WIDTH: 14" - 20" DEPTH: 14" - 20"	WIDTH: 14" - 20" DEPTH: 14" - 20"	WIDTH: 14" - 20" DEPTH: 14" - 20"	WIDTH: 14" - 24" <sup>23</sup> DEPTH: 14" - 24"	WIDTH: 14" - 22" DEPTH: 14" - 20"	WIDTH: 14" - 24" DEPTH: 14" - 24"	WIDTH: 14" - 24" DEPTH: 14" - 24"	WIDTH: 14" - 24" DEPTH: 14" - 24"	WIDTH: 14" - 24" <sup>18, 23</sup> DEPTH: 14" - 24"	WIDTH: 14" - 24" <sup>18, 23</sup> DEPTH: 14" - 24"	N/A	WIDTH: 14" - 20" DEPTH: 14" - 20"	WIDTH: 14" - 20" DEPTH: 14" - 20"
LIFT & TILT	N/A	N/A	WIDTH: 16" - 22" DEPTH: 16" - 22"	WIDTH: 16" - 20" DEPTH: 16" - 20"	WIDTH: 16" - 20" DEPTH: 16" - 20"	WIDTH: 16" - 20" DEPTH: 16" - 20"	N/A	WIDTH: 16" - 22" DEPTH: 16" - 20"	WIDTH: 16" - 22" DEPTH: 16" - 22"	WIDTH: 16" - 22" DEPTH: 16" - 22"	N/A	N/A	N/A	N/A	WIDTH: 16" - 20" DEPTH: 16" - 20"	WIDTH: 16" - 20" DEPTH: 16" - 20"
PEDIATRIC TILT	N/A	N/A	N/A	WIDTH: 10" - 14" DEPTH: 10" - 18"	WIDTH: 10" - 14" DEPTH: 10" - 18"	WIDTH: 10" - 14" DEPTH: 10" - 18"	N/A	WIDTH: 10" - 14" DEPTH: 10" - 18"	WIDTH: 10" - 14" DEPTH: 10" - 18"	WIDTH: 10" - 14" DEPTH: 10" - 18"	N/A	N/A	N/A	N/A	N/A	N/A
LOWEST SEAT-TO-FLOOR HEIGHTS																
SYNERGY® SEAT <sup>14,15</sup>	16.625"	16.5"	17.75"	16.625"	17"	17"	17"	16.625"	16.625"	16.625"	16.625"	18.125"	18.125"	18.375"	8" CASTERS: 16.75" 9" CASTERS: 17.375"	8" CASTERS: 16.75" 9" CASTERS: 17.375"
POWER TILT <sup>14,15</sup>	17"	18.125"	17.5"	16.875"	17.625"	17.625"	19.875"	17.375"	17.375" 17" - SUPER LOW <sup>17</sup>	17.375" 17" - SUPER LOW <sup>17</sup>	17.875"	20" <sup>18, 23</sup>	20" <sup>18, 23</sup>	N/A	8" CASTERS: 18.375" 17.5" - SUPER LOW <sup>17</sup> 9" CASTERS: 19" 18.375" - SUPER LOW <sup>17</sup>	8" CASTERS: 18.375" 17.5" - SUPER LOW <sup>17</sup> 9" CASTERS: 19" 18.375" - SUPER LOW <sup>17</sup>
LIFT & TILT <sup>14,15</sup>	N/A	N/A	19.75"	18.25"	19.25"	19.25"	N/A	20.5"	20" 18" - SUPER LOW <sup>17</sup>	20" 18" - SUPER LOW <sup>17</sup>	N/A	20" <sup>27</sup>	20" <sup>27</sup>	N/A	8" CASTERS: 19.625" 17.875" - SUPER LOW <sup>17</sup> 9" CASTERS: 20.125" 18.375" - SUPER LOW <sup>17</sup>	8" CASTERS: 19.625" 17.875" - SUPER LOW <sup>17</sup> 9" CASTERS: 20.125" 18.375" - SUPER LOW <sup>17</sup>
PEDIATRIC TILT <sup>14,15</sup>	N/A	N/A	N/A	16.5"	17.625"	17.625"	N/A	17.5"	17.5"	17.5"	N/A	N/A	N/A	N/A	N/A	N/A
AVAILABLE WITH MANUAL TILT / RECLINE <sup>16</sup>	YES	YES	YES	YES	YES	YES	NO	YES	YES	YES	NO	NO	NO	NO	YES	YES
BATTERY SIZE (STANDARD) <sup>12</sup>	(2) 12V, U-1	(2) 12V, NF-22	(2) 12V, NF-22	(2) 12V, U-1	(2) 12V, NF-22	(2) 12V, NF-22	(2) 12V, NF-22	(2) 12V, GROUP 24	(2) 12V, NF-22, GROUP 24 or 34	(2) 12V, NF-22, GROUP 24 or 34	(2) 12V, GROUP 24	(2) 12V, NF-22 or GROUP 24	(2) 12V, NF-22 or GROUP 24	(2) 12V, GROUP 24 or (4) NF-22	(2) 12V, GROUP 24 or GROUP 34	(2) 12V, GROUP 24 or GROUP 34
BATTERY WEIGHT (EA.) <sup>25</sup>	24.5 LBS.	38 LBS.	38 LBS.	24.5 LBS.	38 LBS.	38 LBS.	38 LBS.	53.5 LBS.	38 LBS. / 53.5 LBS.	38 LBS. / 53.5 LBS.	53.5 LBS.	53.5 LBS.	53.5 LBS.	53.5 LBS. / 38 LBS.	53.5 LBS. / 43 LBS.	53.5 LBS. / 43 LBS.
AVAILABLE ELECTRONICS <sup>22</sup>	50A PG VSI 70A PG REMOTE PLUS	70A PG VSI 70A PG REMOTE PLUS	75A Q-LOGIC NE 75A Q-LOGIC NE+ 75A Q-LOGIC EX	70A PG VR2 100A Q-LOGIC EX	75A Q-LOGIC NE 75A Q-LOGIC NE+ 80A Q-LOGIC EX	75A Q-LOGIC NE 75A Q-LOGIC NE+ 80A Q-LOGIC EX	75A Q-LOGIC NE 75A Q-LOGIC NE+ 100A Q-LOGIC EX	100A Q-LOGIC EX	70A PG VR2 100A Q-LOGIC EX <sup>24</sup>	100A Q-LOGIC EX	75A Q-LOGIC NE 75A Q-LOGIC NE+ 100A Q-LOGIC EX	70A PG VR2 80A Q-LOGIC EX	80A Q-LOGIC EX	100A Q-LOGIC EX	70A, PG VR2 80A, Q-LOGIC EX 100A, Q-LOGIC EX <sup>24</sup>	80A, Q-LOGIC EX 100A, Q-LOGIC EX <sup>24</sup>
STANDARD CHARGER	5A OFF-BOARD <sup>21</sup>	8A OFF-BOARD	5A OFF-BOARD	5A OFF-BOARD	8A OFF-BOARD	8A OFF-BOARD	8A OFF-BOARD	8A OFF-BOARD	8A OFF-BOARD	8A OFF-BOARD	8A OFF-BOARD	8A OFF-BOARD	8A OFF-BOARD	8A OFF-BOARD	8A OFF-BOARD	8A OFF-BOARD
MOTOR PACKAGES	MID-WHEEL DRIVE 2-POLE	MID-WHEEL DRIVE 2-POLE GLIDE	MID-WHEEL 6® 2-POLE IN-LINE	MID-WHEEL 6® 2-POLE GLIDE	MID-WHEEL 6® 2-POLE GLIDE <sup>1</sup> or 4-POLE 6 MPH <sup>2</sup>			MID-WHEEL 6® 4-POLE 8 MPH	MID-WHEEL 6® 4-POLE 6 MPH <sup>1</sup> or 4-POLE 8 MPH <sup>2</sup>			MID-WHEEL DRIVE 2-POLE HIGH TORQUE or 2-POLE HIGH SPEED	MID-WHEEL DRIVE 2-POLE HIGH SPEED	MID-WHEEL DRIVE 4-POLE IN-LINE	REAR WHEEL DRIVE 2-POLE GLIDE, <sup>1</sup> 4-POLE 6 MPH <sup>2</sup> or 4-POLE 8 MPH <sup>2</sup>	REAR WHEEL DRIVE 4-POLE 6 MPH <sup>1</sup> or 4-POLE 8 MPH <sup>2</sup>
WEIGHT CAPACITY <sup>13</sup>	300 LBS. <sup>7</sup>	300 LBS.	300 LBS.	300 LBS.	300 LBS.	300 LBS.	400 LBS.	300 LBS.	300 LBS.	300 LBS.	450 LBS. <sup>6, 8</sup>	500 LBS. <sup>4, 6, 8</sup>	450 LBS. <sup>6, 8</sup>	650 LBS. <sup>26</sup>	300 LBS.	300 LBS.
BASE WEIGHT	92 LBS. <sup>11</sup>	140 LBS.	121.5 LBS.	112 LBS.	129 LBS.	129 LBS.	129 LBS.	170 LBS.	147 LBS.	147 LBS.	147 LBS.	141.5 LBS.	141.5 LBS.	176 LBS.	144 LBS.	144 LBS.
SUSPENSION	ACTIVE-TRAC®	ACTIVE-TRAC®	ATX	ATX	ATX	ATX	ATX	ATX	ATX	ATX	ATX	ACTIVE-TRAC® <sup>5</sup>	ACTIVE-TRAC® <sup>5</sup>	LIMITED	SPORT TRAC	SPORT TRAC
MEDICARE CODE COVERAGE - For more information on Medicare code coverage, please consult our New Medicare Code Product Planning Education Guide.																
	GROUP 2: SINGLE POWER	GROUP 3: SINGLE POWER, MULTIPLE POWER	GROUP 3: STANDARD, SINGLE POWER, MULTIPLE POWER	GROUP 2: STANDARD, SINGLE POWER	GROUP 3: STANDARD, SINGLE POWER, MULTIPLE POWER	GROUP 4: STANDARD, SINGLE POWER, MULTIPLE POWER	GROUP 3: HEAVY DUTY, SINGLE POWER H.D., MULTIPLE POWER H.D.	GROUP 4: STANDARD, SINGLE POWER, MULTIPLE POWER	GROUP 3: STANDARD, SINGLE POWER, MULTIPLE POWER	GROUP 4: STANDARD, SINGLE POWER, MULTIPLE POWER	GROUP 3: HEAVY DUTY, SINGLE POWER H.D., MULTIPLE POWER H.D.	GROUP 3: SINGLE POWER HEAVY DUTY, SINGLE POWER VERY H.D., MULTIPLE POWER VERY H.D.	GROUP 4: HEAVY DUTY, SINGLE POWER H.D., MULTIPLE POWER H.D.	GROUP 3: SINGLE POWER VERY HEAVY DUTY	GROUP 3: STANDARD, SINGLE POWER, MULTIPLE POWER	GROUP 4: STANDARD, SINGLE POWER, MULTIPLE POWER

- 1) Standard

2) Optional

3) 4.5 mph with high-torque motor package

4) High-speed motor package increases speed to 6 mph and reduces weight capacity by 50 lbs.

5) With rear caster suspension

6) 400 lbs. weight capacity with TRU-Balance® 1 Power Tilt

7) 200 lbs. (with TRU-Balance® Power Positioning System)

8) 300 lbs. weight capacity with power tilt/recline

9) Speed varies with user weight, terrain type, battery charge, battery condition and tire pressure.

10) Without front riggings

11) Base weight does not include 7 lbs. for the universal friction seat plate.

12) Battery capacity may change when adding power positioning systems.

13) Weight capacity is dictated by the selection of seating.

14) All measurements +/- 1/8" with 18" x 18" seat, fixed towers, 300 lbs. weight capacity and solid tires (add 3/8" with pneumatic tires). Widths may increase seat-to-floor height. Contact Customer Service for details. Listed measurements are in the lowest position; does not include elevating system unless specified.

15) Power Recline and Power Front Riggings do not increase seat-to-floor height.

16) The Synergy Manual Tilt weight capacity is 75 lbs. and maximum dimensions are 14" W x 14" D. Maximum dimensions of the Manual Recline vary by power base and seating system. Call for details.

17) Requires Group 34 batteries

18) Requires NF-22 batteries

19) Seats wider than 26" will be wider than the base

20) Requires off-board charger

21) Optional on-board charger not available with TRU-Balance®

22) All Quantum Rehab® units can be ordered with specialty controls; SOF required for 1650 with specialty controls.

23) Requires TRU-Balance® 1 Tilt for weight capacities up to 400 lbs.

24) Required with high-speed motors

25) Battery weight may vary based on manufacturer.

26) 500 lbs. maximum with Medicare models

27) 300 lbs. weight capacity with TRU-Balance® Lift & Tilt

28) The addition of Power Recline does not affect the allowable seating sizes.

29) Also available on the Q614

H.D. = Heavy Duty
- For more information on Medicare code coverage, please consult our **Medicare Code Product Planning Education Guide.**
- The information contained herein is correct at the time of publication. We reserve the right to alter specifications without prior notice.
- Colors available on: Q1103 Ultra, Q1121, Q614, Q610, Q600, Q640, Q600 XL (HD), Q1420, Q1424, Q1650, R-4000 and R-4400
- Candy Apple Red

Viper Blue

Onyx Black

Champagne

Sunburst Orange
- Colors available on: Q610, Q600, Q640
- Mariner Blue

Cardinal Red

Spring Green

Violet

Solar Yellow

Pearl Pink
- Colors available on: Q6000, Q6400, Q6000Z and Q6400Z
- Metallic Red

Metallic Blue

Metallic Black

Metallic Silver

Sunburst Orange
- Colors available on: Q600, Q640 and Q600 XL (HD)
- Emerald Green <sup>29</sup>

Pewter

Silver <sup>29</sup>

Kelly Green

Graphite Blue

Sapphire Blue

Tangerine





# QUANTUM® SERVICES

## **Quantum Quick Connect (1-877-800-7808)**

Get the answers you need quickly...

**Press 2** to track product orders.

**Press 3** to order parts and troubleshoot products.

**Press 4** to get coding and reimbursement information.

**Press 5** to arrange custom modifications.

**Press 6** to request a quote or order products.

## **Sales Support (1-866-800-2002)**

Assistance with design, ordering, pricing and quality assurance

## **Custom Group (1-877-465-2999)**

Providing innovative custom solutions and specialized product modifications – your “off the order form” solution team

## **Technical Support (extension 5200)**

Assistance with troubleshooting and parts order placement

## **Product Planning and Reimbursement Center (extension 2233)**

Assistance with understanding Medicare codes and coverage criteria, product planning, provision guidelines, claims coding, pre-screens and assistance in regard to high-end rehab clients

## **Education ([www.quantum-university.com](http://www.quantum-university.com))**

Offering accredited CEU and CEC courses through a national seminar tour

## **Set to Spec Service**

Quantum Rehab's Set to Spec service is designed to assist you in delivering Q6 Power Chairs to your clients. We will pre-set, to your specifications, seat-to-floor heights, seating center of gravity, armrest heights, front riggings, thoracic and/or thigh laterals and headrest assembly.

## **Quantum Quick Ship Service**

Order a Quantum Power Chair, configured to your specifications, with only a four day lead time (*Call your Quantum Sales Rep. for available models*).

**(US)** 866-800-2002 • **(Canada)** 888-570-1113  
Visit us on the web: [www.quantumrehab.com](http://www.quantumrehab.com)

**QUANTUM**  
**REHAB®**  
**MOVING FORWARD**