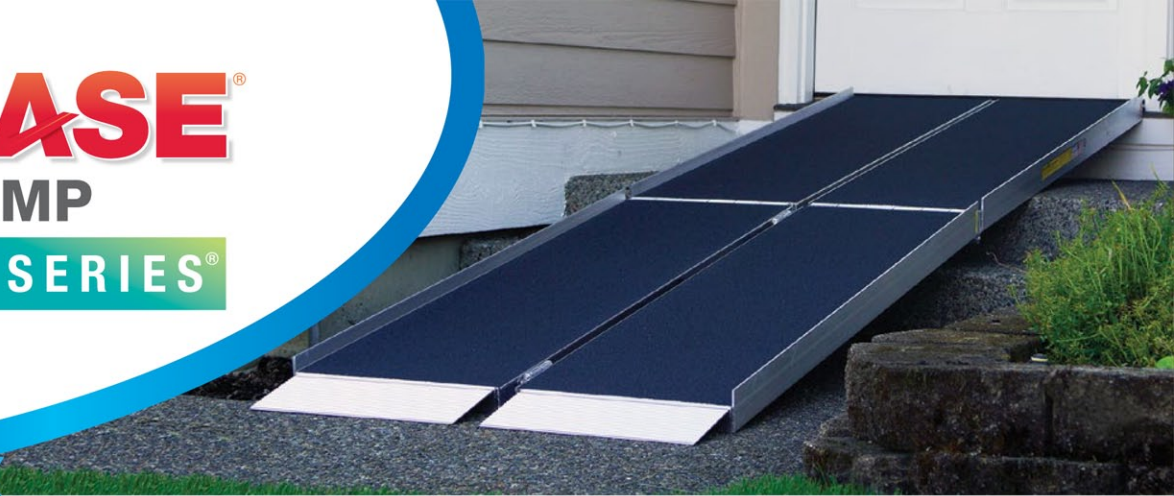


# SUITCASE<sup>®</sup>

## TRIFOLD<sup>®</sup> RAMP

### ADVANTAGE SERIES<sup>®</sup>



This ramp, with its unique 3-fold design, offers the length required for wheelchairs and scooters to easily access steps, vehicles, and raised landings. The ramp is designed to be used and carried as one unit or can be separated into two individual sections. The TRIFOLD features interlocking hinges to provide smoother operation and reduced pinch points. It features an applied skid-resistant surface and self-adjusting bottom transition plates for easy conversion from ramp to ground. Manufactured of welded aircraft-grade aluminum. Top Lip Extension (TLE) compatible.

#### TOP LIP EXTENSION (TLE)

The TLE will increase the reach of the ramp by extending the top lip from 3" to 9".



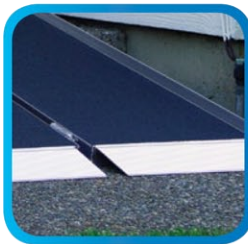
Patented



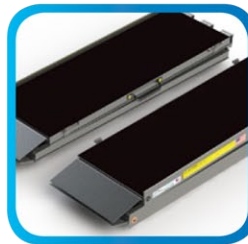
No-pinch hinge



Ergonomically designed handles offer convenient carrying and a comfortable grip



Bottom transition plates adjust to uneven terrain



Separates for transport and storage

### SUITCASE<sup>®</sup> TRIFOLD Advantage Series<sup>®</sup>

SPECIFICATIONS	TRIFOLD AS5	TRIFOLD AS6	TRIFOLD AS7	TRIFOLD AS8	TRIFOLD AS10	TLE
Usable Size	5' x 29 1/2"	6' x 29 1/2"	7' x 29 1/2"	8' x 29 1/2"	10' x 29 1/2"	8 1/2" x 13 7/8" x 2 3/8"
Folded Size (LxWxH)	30 3/4" x 15" x 11 1/2"	36 3/4" x 15" x 11 1/2"	42 3/4" x 15" x 11 1/2"	48 3/4" x 15" x 11 1/2"	60 3/4" x 15" x 11 1/2"	n/a
Weight (lbs.)*	16 ea. (2 sections)	19 ea. (2 sections)	22 ea. (2 sections)	25 ea. (2 sections)	30 ea. (2 sections)	5 per set
Weight Capacity (lbs.)	800	800	800	800	800	**500
Usage Guidelines	Curbs, 1-2 steps, some minivans	1-3 steps, minivans, some vans & SUVs	1-3 steps, minivans, some vans & SUVs	2-3 steps, minivans, some vans & SUVs	2-4 steps, minivans, some vans & SUVs	n/a

\* Weights are approximate and may vary. † Weights listed are per ramp section (each section can be carried, assembled, and stored separately). Consult your equipment's owner guide for proper degree of incline. Never exceed its recommendations. † \*\* Ramp weight capacity reduced when used with the TLE.